

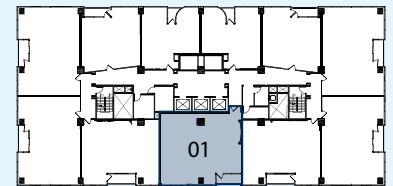
ONE

LEXINGTON

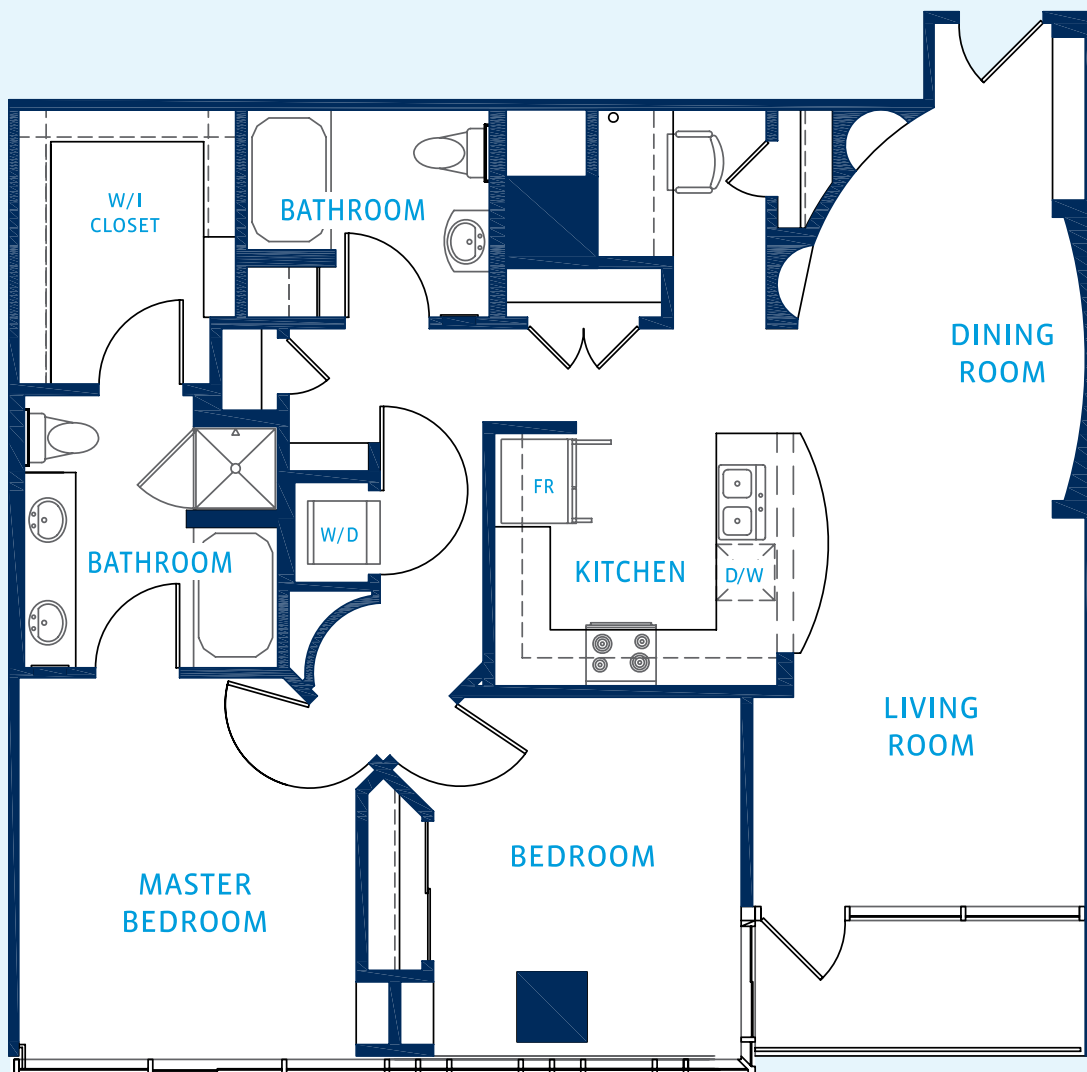
PLAN B3

2 bedroom / 2 bathroom

1,297 square feet



Floors: 3-15



Lexington Avenue LLP reserves the right to change the floorplates, floorplans and specifications for the residences shown. All floorplan and floorplate dimensions are approximate and may vary. No offer to sell or lease can be made and no offer can be accepted prior to the issuance of a Final Arizona Subdivision Public Report.